



Deco Linen

Deco Linen is Outokumpu's most popular patterned surface finish. Its texture is produced by embossing a pattern inspired by natural linen fabric on one side of a stainless steel coil in a Sendzimir rolling mill.

General characteristics

The product is a prime choice for elevators but also in façade applications. While in elevators its aesthetic appeal in combination with a high robustness is exploited, on façades the alluring reflection characteristic that this finish provides is the reason for its popularity. Although the pattern itself is not visible anymore from a short distance, it still creates on the façade a diffused and smooth reflection of all the colors surrounding the building. Depending on daytime, weather condition or season this feature of a Deco Linen façade lends to always new perceptions of a building.

In order to either fulfill specific glare regulations or meet an architect's particular taste, Outokumpu offers Deco Linen with four different gloss characteristics. Besides the standard Deco Linen with the highest reflection, the lower reflecting versions are called Deco Linen Star, Deco Linen Matt and Deco Linen Supermatt.

Deco Linen

The initial and standard Linen version.

Deco Linen Star

Compared to the standard Deco Linen this high-end Linen version goes through an additional production process which adds a very fine texture upon the pattern structure resulting in a more sparkling finish with slightly lower reflectance.

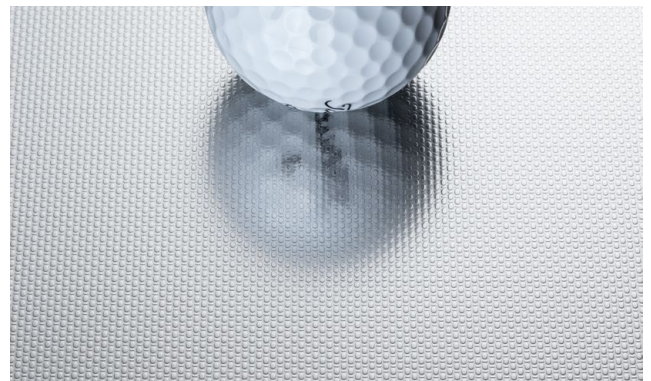


Fig. 1. Deco Linen.



Fig. 2. Deco Linen Star.

Deco Linen Matt

Duller than regular Deco Linen and Deco Linen Star but nonetheless a lively finish due to a smooth and slightly glittering reflectance.

Deco Linen Supermatt

This symbiosis of patterning and industrial bead blasting results in a homogeneously dull finish with well below 10% specular reflectance but still showing an unobtrusive sparkle.

For easy processability and perfect flatness all four Deco Linen versions experience a recovery annealing after the embossing process and are tension leveled. A double-sided embossing of individual patterns on top and bottom side might be possible on request.

Standards

Standards

Table 1

Standard	Designation
EN 10088-2	2M
ASTM A480	-

Properties

Properties

Table 2

	Deco Linen	Deco Linen Star	Deco Linen Matt	Deco Linen Supermatt
Specular reflectance (indicative guiding values)	≈ 25 %	≈ 20 %	≈ 12 %	≈ 8 %

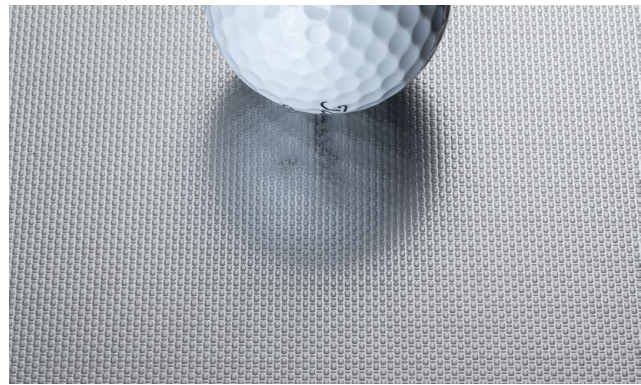


Fig. 3. Deco Linen Matt.

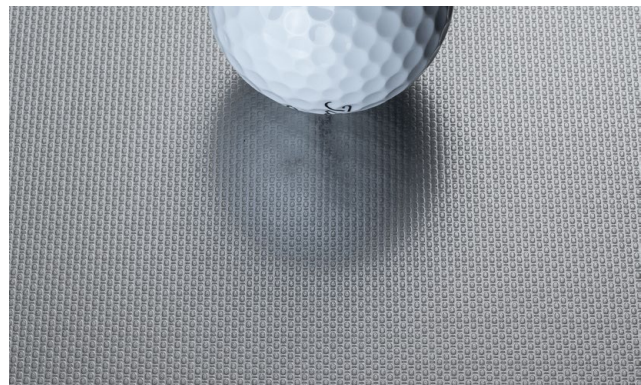


Fig. 4. Deco Linen Supermatt.

Available steel grades

Available steel grades

Table 3

Outokumpu steel name	Deco Linen	Deco Linen Star	Deco Linen Matt	Deco Linen Supermatt
Moda 430/4016	X	-	X	-
Core 441/4509	X	-	X	-
Core 304/4301 Core 304L/4307	X	X	X	X
Supra 316/4401 Supra 316L/4404	X	X	X	X
Forta DX 2205	X	-	-	-

Other steel grades on request, please contact us.

Available dimensions

Deco Linen available dimensions

Table 4

Outokumpu steel name	Tension leveled thickness range in width 1250 mm	Tension leveled thickness range in width 1500 mm	Not tension leveled thickness range in width 1250 mm	Not tension leveled thickness range in width 1500 mm
Moda 430/4016	0.3–3 mm	0.4–2.5 mm	3–3.5 mm	2.5–3.5 mm
Core 441/4509	0.3–3 mm	0.4–2.5 mm	3–3.5 mm	2.5–3.5 mm
Core 304/4301 Core 304L/4307	0.3–3 mm	0.4–2.5 mm	3–3.5 mm	2.5–3.5 mm
Supra 316/4401 Supra 316L/4404	0.3–3 mm	0.4–2.5 mm	3–3.5 mm	2.5–3.5 mm
Forta DX 2205	0.4–1.5 mm	0.5–1.2 mm	1.5–3 mm	1.2–3 mm

Deco Linen Star available dimensions

Table 5

Outokumpu steel name	Tension leveled thickness range in width 1250 mm	Tension leveled thickness range in width 1500 mm	Not tension leveled thickness range in width 1250 mm	Not tension leveled thickness range in width 1500 mm
Core 304/4301 Core 304L/4307	0.3–3 mm	0.4–2.5 mm	3–3.5 mm	2.5–3.5 mm
Supra 316/4401 Supra 316L/4404	0.3–3 mm	0.4–2.5 mm	3–3.5 mm	2.5–3.5 mm

Deco Linen Matt available dimensions

Table 6

Outokumpu steel name	Tension leveled thickness range in width 1250 mm	Tension leveled thickness range in width 1500 mm	Not tension leveled thickness range in width 1250 mm	Not tension leveled thickness range in width 1500 mm
Moda 430/4016	0.3–3 mm	–	3–3.5 mm	–
Core 441/4509	0.3–3 mm	–	3–3.5 mm	–
Core 304/4301 Core 304L/4307	0.4–3 mm	0.6–2.5 mm	3–3.5 mm	2.5–3.5 mm
Supra 316/4401 Supra 316L/4404	0.4–3 mm	0.6–2.5 mm	3–3.5 mm	2.5–3.5 mm

Deco Linen Supermatt available dimensions

Table 7

Outokumpu steel name	Tension leveled thickness range in width 1250 mm	Tension leveled thickness range in width 1500 mm	Not tension leveled thickness range in width 1250 mm	Not tension leveled thickness range in width 1500 mm
Core 304/4301 Core 304L/4307	0.5–3 mm	0.8–2.5 mm	3–3.5 mm	2.5–3.5 mm
Supra 316/4401 Supra 316L/4404	0.5–3 mm	0.8–2.5 mm	3–3.5 mm	2.5–3.5 mm

Typical applications

- Elevators
- Escalators
- Cash desks
- Exterior and interior architecture
- Sinks
- Claddings
- Facades
- Cash desks
- Display cases
- Machine housings
- Store design

Working towards a world that lasts forever

We work with our customers and partners to create long lasting solutions for the tools of modern life and the world's most critical problems: clean energy, clean water, and efficient infrastructure. Because we believe in a world that lasts forever.

Information given in this data sheet may be subject to alterations without notice. Care has been taken to ensure that the contents of this publication are accurate but Outokumpu and its affiliated companies do not accept responsibility for errors or for information which is found to be misleading. Suggestions for or descriptions of the end use or application of products or methods of working are for information only and Outokumpu and its affiliated companies accept no liability in respect thereof. Before using products supplied or manufactured by the company the customer should satisfy himself of their suitability.

MODA, CORE, SUPRA, FORTA, ULTRA, DURA, THERMA and DECO are trademarks of Outokumpu Oyj.

PRODEC, EDX, FDX, FDX 25, FDX 27, LDX, 253 MA, 254 SM0, 654 SM0, LDX 2101, LDX 2404 are registered trademarks of Outokumpu Oyj.

